



RE/REM450



RE/REM410



RE/REM400

RE/REM Hollow Shaft INCREMENTAL ROTARY ENCODERS

- Incremental rotary encoders with or without zero pulse
- Pulses per revolution: 2 to 12500
- Aluminium housing
- Several configurations available

MECHANICAL VERSIONS

RE400 • REM400	RE470 • REM470	RE410 • REM410	RE450 • REM450
Body Ø: 58 mm	Body Ø: 58 mm	Body Ø: 58 mm	Body Ø: 58 mm
Flange Ø: 53.5 mm	Flange Ø: 72 mm	Flange Ø: 63 mm	Flange Ø: 63 mm
Fixing holes on Ø 30 mm	Fixing holes on Ø 63.5 mm	Hollow shaft for motor coupling Ø 8, 10, 12, 14 or 15 mm	Hollow shaft for motor coupling Ø 8, 10, 12, 14 or 15 mm
Motor coupling through hollow shaft Ø 6, 8 or 10 mm	Motor coupling through hollow shaft Ø 6, 8 or 10 mm	Antirotational fixing	Fixing by elastic support

PULSES PER REVOLUTION

Series RE

2, 5, 10, 15, 20, 25, 27, 30, 40, 50, 60, 80, 100, 115, 125, 150, 180, 200, 250, 256, 300, 360, 500, 600, 720, 750, 800, 900, 1000, 1200, 1250, 1440, 1500, 1800, 2000, 2400, 2500, 2700, 2880, 3000, 3600, 4000, 4500, 5000, 7200, 8000, 9000, 10000, 12500

Magnetic series REM

8, 10, 16, 20, 25, 32, 40, 50, 64, 80, 100, 125, 128, 200, 250, 256, 400, 500, 512, 1024, 2048

MECHANICAL & ENVIRONMENTAL SPECIFICATIONS

RE/REM	400 • 470	410 • 450
• Materials: case shaft	Aluminium AISI 303 steel	
• Weight	400 g circa	
• Hollow shaft diameter	6, 8, 10 mm	8, 10, 12, 14, 15 mm
• Revolutions/minute	6000 continuous/10000 temporary	
• Starting torque	≤0,8 Ncm	
• Inertia	≤25 g cm ²	
• Max load	80 N axial/100 N radial	
• Vibration resistance (10÷2000 Hz)	100 m/sec ²	
• Shock resistance (11 ms)	50 G	
• Protection degree	IP65	
• Operating temperature	-10 ÷ 70°C	
• Stocking temperature	-20 ÷ 80°C	

ELECTRICAL & OPERATING SPECIFICATIONS

• Pulse code	Incremental
• Pulses per revolution	RE 2 ÷ 12500 REM 8÷2048
• Zero reference pulse	one pulse/revolution
• Output signals	Two square waves 90° ±15° out of phase – Zero pulse width: 90°±15°
• Electronic outputs	push-pull, NPN open collector*, 5Vdc or 5/30 Vdc line driver signals protected against short circuits
• Supply voltage	5/30 Vdc protection against polarity reversal
• Absorption	30÷80 mA max
• Max frequency	100 KHz / 200 KHz for ppr>1250
• Connections	Axial or radial cable 3 m long /1 m for line driver output Axial or radial MS connector, 7-pin/10-pin for line driver output

* NPN open collector: series **RE** only



ELAP VIA VITTORIO VENETO, 4-I-20094 CORSICO (MI) • TEL. +39.02.4519561
FAX +39.02.45103406 • E-MAIL INFO@ELAP.IT • SITE WWW.ELAP.IT



RE/REM470



RE/REM400



RE/REM470

CONNECTIONS									
SIGNALS	Push Pull – Open Collector NPN			SIGNALS	Line Driver			10-pin connector	Cable colours
	7-pin connector	Cable colours			7-pin connector	Cable colours			
	DIAGRAM 1	DIAGRAM 2		DIAGRAM 3		DIAGRAM 4			
Out 1	A	C	White	Out 1	A	A	White	A	White
Out 2	B	E	Green	Out 2	B	B	Green	B	Green
Out Z RE/REM4x1	C	D	Brown	Out Z		C		C	Grey
+ Vdc	D	F	Red	+ Vdc	D	D	Red	D	Red
0V	F	A	Blue	+ Vdc		E		E	Red
Non-connected	E	B		0V	F	F	Blue	F	Blue
Non-connected	G	G		Out 1 ₋	C	G	Brown	G	Brown
Earth			Shield	Out 2 ₋	E	H	Yellow	H	Yellow
				Out Z ₋		I		I	Pink
				Non-connected	G	J		J	Shield

ORDERING INFORMATION

RE400	C	1000	5/30	R	6	PP	2
-------	---	------	------	---	---	----	---

CONNECTION DIAGRAM
2 – 4

OUTPUT SIGNALS
PP Push-pull
OC NPN Open Collector (RE only)
LD Line-driver

HOLE Ø
6 -8 -10 -12 - 14- 15 mm

CONNECTIONS POSITIONS
A Axial
R Radial

SUPPLY VOLTAGE
5/30 Vdc

PPR
RE 2 ÷ 12500
REM 8 ÷ 2048

CONNECTION OUTLET
- Connector
C Cable

TYPE
RE400 – RE470 – RE410 – RE450 no zero pulse
RE401 – RE471 – RE411 – RE451 zero pulse
REM400 – REM470 – REM410 – REM450 no zero pulse
REM401 – REM471 – REM411 – REM451 zero pulse

VARIATIONS ADMITTED WITHOUT NOTICE

Hollow shaft alternative encoder series:

REC440 • REC450

Compact encoders 2÷12500 ppr
Body Ø 58 mm, h 38 mm • M12 connector or cable outlet • Aluminium housing • UL Listed models available



[Encoder REC](#)



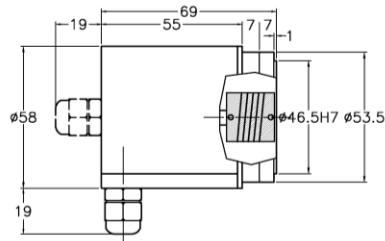
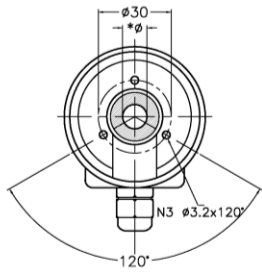




DIMENSIONS

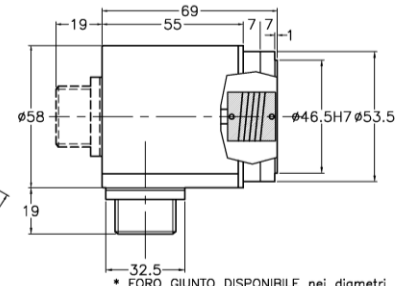
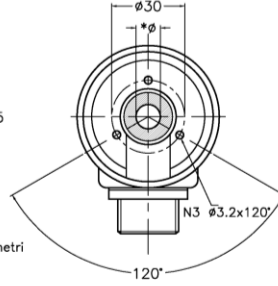
RE/REM400

RE400 uscita serracavo
RE400 cable outlet



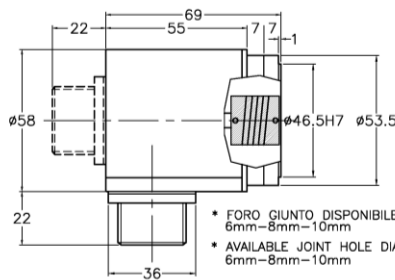
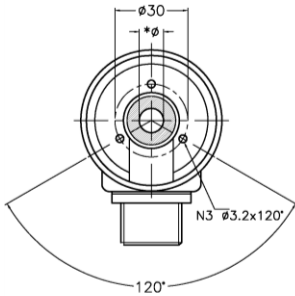
- * FORO GIUNTO DISPONIBILE nei diametri 6mm-8mm-10mm
- * AVAILABLE JOINT HOLE DIAMETERS 6mm-8mm-10mm

RE400 uscita connettore 7 poli
RE400 7pin connector outlet



- * FORO GIUNTO DISPONIBILE nei diametri 6mm-8mm-10mm
- * AVAILABLE JOINT HOLE DIAMETERS 6mm-8mm-10mm

RE400 uscita connettore 10 poli
RE400 10pin connector outlet

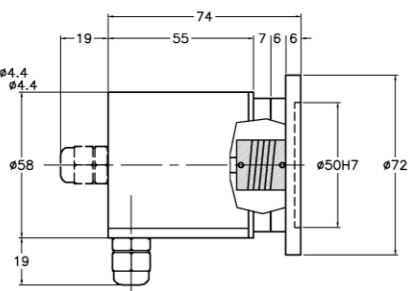
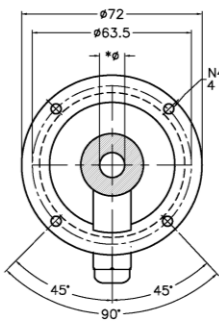


- * FORO GIUNTO DISPONIBILE nei diametri 6mm-8mm-10mm
- * AVAILABLE JOINT HOLE DIAMETERS 6mm-8mm-10mm

Ref. M148V

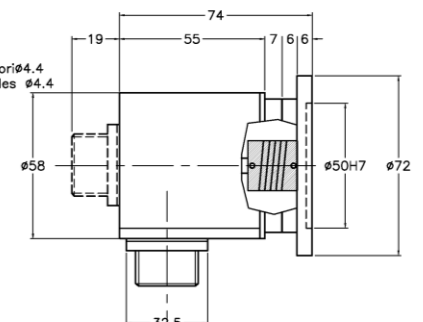
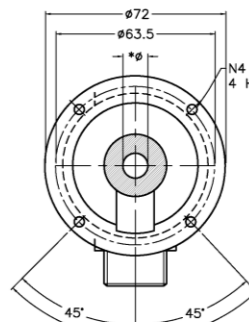
RE/REM470

RE470 uscita serracavo
RE470 cable output



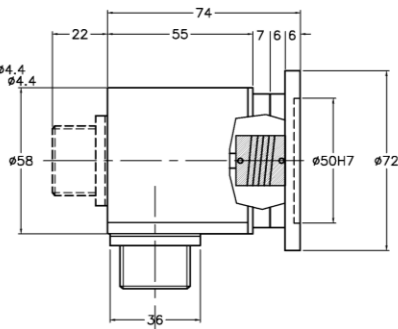
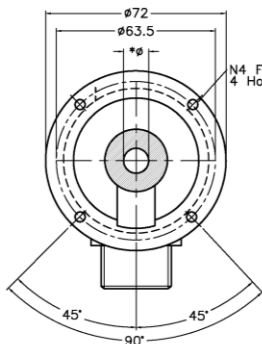
- * FORO GIUNTO DISPONIBILE nei diametri 6mm-8mm-10mm
- * AVAILABLE JOINT HOLE DIAMETERS 6mm-8mm-10mm

RE470 uscita connettore 7p
RE470 7pin output connector

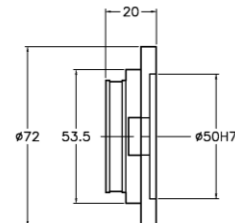


- * FORO GIUNTO DISPONIBILE nei diametri 6mm-8mm-10mm
- * AVAILABLE JOINT HOLE DIAMETERS 6mm-8mm-10mm

RE470 uscita connettore 10p
RE470 10 pin output connector



- * FORO GIUNTO DISPONIBILE nei diametri 6mm-8mm-10mm
- * AVAILABLE JOINT HOLE DIAMETERS 6mm-8mm-10mm

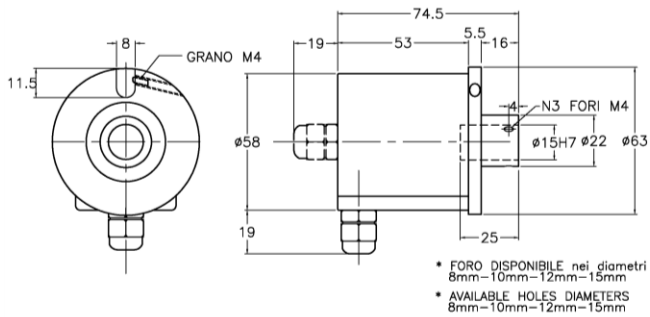


Ref. M1510

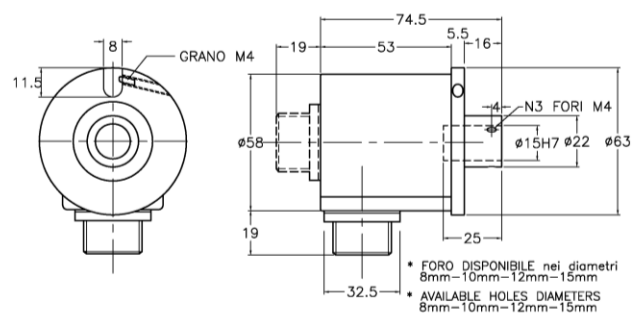
DIMENSIONS

RE/REM410

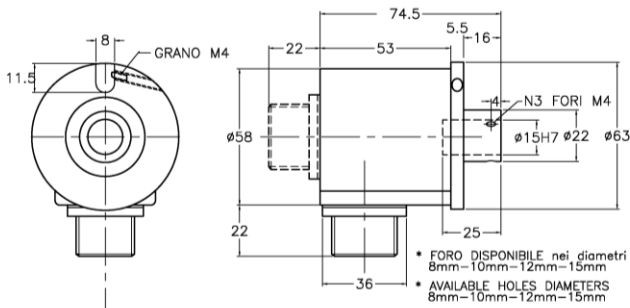
RE410 uscita serracavo
RE410 cable outlet



RE410 uscita connettore 7 poli
RE410 7pin connector outlet



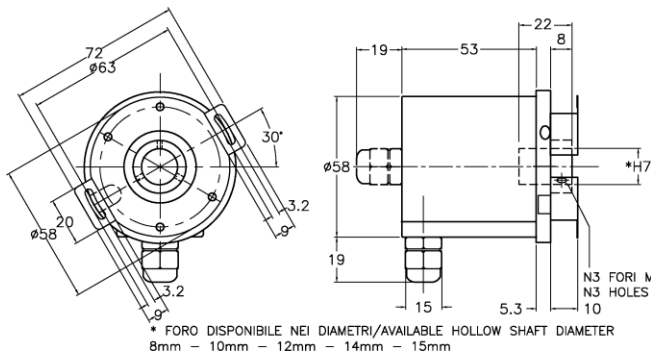
RE410 uscita connettore 10 poli
RE410 10pin connector outlet



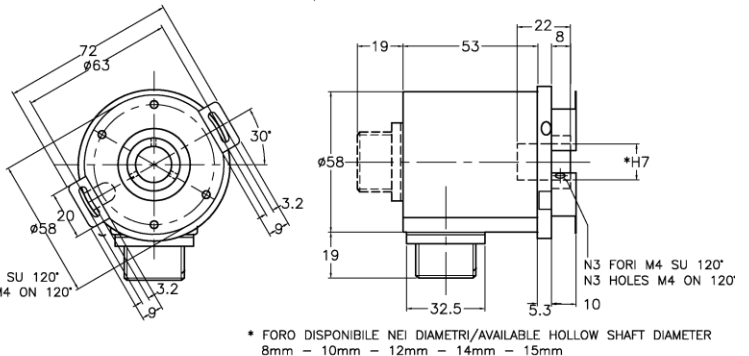
RE/REM450

Ref. M1484

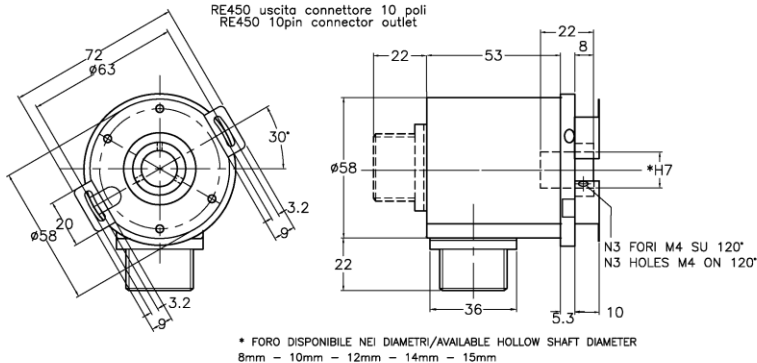
RE450 uscita serracavo
RE450 cable outlet



RE450 uscita connettore 7 poli
RE450 7pin connector outlet



RE450 uscita connettore 10 poli
RE450 10pin connector outlet



Ref. M2045

REFERENCES

Further information and dimensional drawings at the following links:

<https://www.elap.it/incremental-encoders/hollow-shaft-encoders/>
<https://www.elap.it/incremental-encoders/encoder-rem/>



Encoder RE4xx Encoder REM



ELAP VIA VITTORIO VENETO, 4 • I-20094 CORSICO (MI) • TEL. +39.02.4519561
 FAX +39.02.45103406 • E-MAIL INFO@ELAP.IT • SITE WWW.ELAP.IT