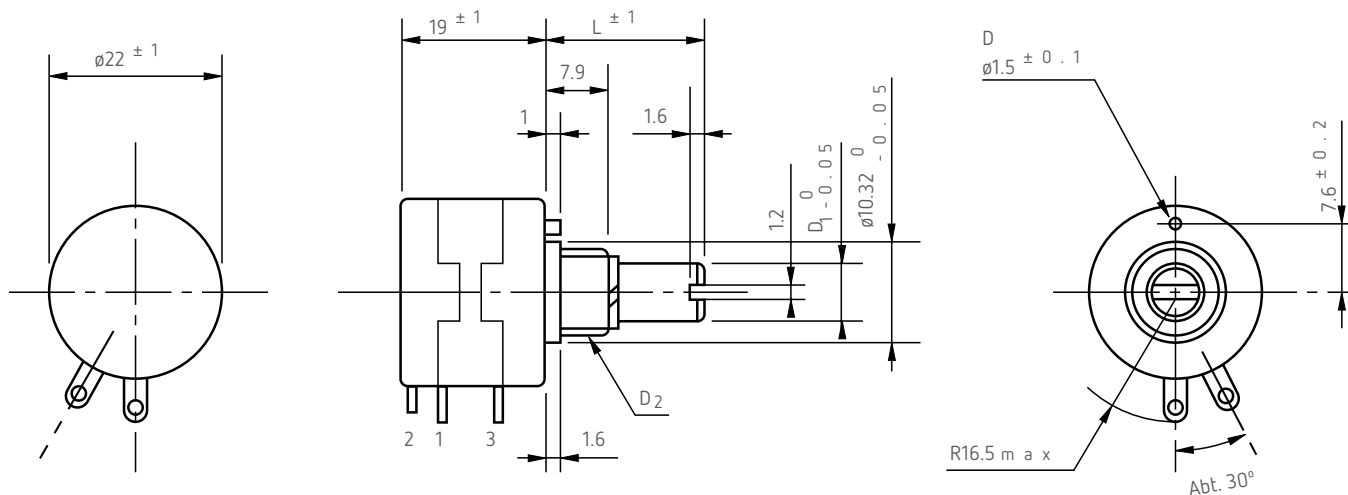




α 22HP

Standard dimensions



Model No.	Shaft Dimensions		Mounting Screw		Anti-rotation
	d1	L	d2	D	
22HP-10	ø6	20.6	3 / 8 - 32 U N E F		Yes
22HP-10M	ø6	25.0	M 9 P = 0.75		No
22HP-10E	ø6.35	20.6	3 / 8 - 32 U N E F		Yes
22HP-10N	ø6	20.6	M 9 P = 0.75		No

- Note:**
- 1pc. each inner teeth washer and hex nut are attached.
 - Outer dimensions of 5-turn version are same as those of 10-turn
 - Please process the mounting hole on the panel to be mounted with this potentiometer by the diameter of 10.32mm



Model 22HP-10

Standard Model Nos.

5-turn models:

- 22HP-5 22HP-5M
- 22HP-5E 22HP-5N

10-turn models:

- 22HP-10 22HP-10M
- 22HP-10E 22HP-10N

Note: Please select the exact model number from the right-side table, because each model number has different shaft dia. and bushing dimensions.

General Specifications

Standard Resistance Range:	100Ω to 50kΩ (5-turn) 100Ω to 100kΩ (10-turn)	Max. Torque exerted on fastening the mounting nut to the bushing:	Within 1.0N·m (10kgf·cm) (in case of panel thickness with over 2.5mm, the rotating torque may become heavier).
Total Resistance Tolerance:	Standard Class ±3%(H) Precision Class ±1%(F)	Max. Working Voltage:	250V
Independent Linearity Tolerance:	5-turn 10-turn Standard Class ±0.3% ±0.25% Precision Class ±0.2% ±0.1% (within 5kΩ) (±0.25%) (±0.15%)	Resist. Temperature Coefficient of Wire:	±20p.p.m./°C
Power Rating:	1.0W (5-turn) 2.0W (10-turn)	Materials:	Shaft: Stainless steel Housing case: Glass-filled nylon Bushing: Glass-filled nylon (for ganged version the bushing is metal- brass without plating).
Noise:	Within 100Ω E.N.R.	Terminals:	Gold-plated brass (all terminals can be Fitted with the AMP 110 series faston receptable (2.8x0.5mm) or equivalents.
Electrical Travel:	360° Xn ±5° (n: No. of turns)	Mass:	Approx. 20g (both 5-turn and 10-turn).
Mechanical Travel:	360° Xn ^{+10°} ₀ (n: No. of turns)		
Insulation Resistance:	Over 1,000MΩ at 500 V.D.C.		
Dielectric Strength:	1 minute at 1,000 V.A.C.		
Starting Torque:	Within 10mN·m (100gf·cm)		
Stopper Strength:	Approx. 0.35N·m (3.5kgf·cm)		

Standard Resistance Values | No. Of Wire Turns | Resistance Wire Used

Resist. Value (Ω)	100	200	500	1k	2k	5k	10k	20k	50k	100k
22HP-5	1, 2 4 0	1, 5 6 0	2, 0 0 0	2, 5 1 0	2, 4 0 0	3, 2 0 0	3, 9 0 0	4, 8 0 0	5, 5 0 0	-
22HP-10	2, 1 0 0	2, 4 8 0	3, 3 0 0	4, 0 0 0	5, 0 2 0	5, 0 0 0	6, 4 0 0	7, 8 0 0	10, 1 0 0	11, 0 0 0
Resist. Wire Used	Cu-Ni System					Ni-Cr System				

Special Specifications Available

Shaft with front and rear extension (rear shaft with 6mm dia. and 15mm length), multi-ganged (available up to 10 gangs), with high torque, special shaft dia. (ø3mm, ø3.175mm, ø4mm, ø5mm), special machining on the shaft, with plastic shaft, metal bushing type (22HPM-n with anti-rotation pin), 1, 2, 3, 4, 6, 7 and 8-turn versions are available (these versions have the same outer dimensions, but general specifications are please request us for details), simple sealed housing, slipping-clutch incorporated type (20mN·m~60mN·m), extra taps (available up to 1 tap only for 10-turn model), servomount type (same dimensions as 22HPS-10).