



MEM620-Bus



MEM540-Bus



MEM520-Bus

ABSOLUTE ENCODERS WITH FIELDBUS INTERFACE **CANopen**

CAN (Controller Area Network) is a fast data transmission protocol, suitable to applications in industrial automation. Through the **CANbus** actuators and sensors, even by different manufacturers, can easily communicate.

CANopen fieldbus ensures:

- **Data rate of 1 MBaud** with network expansion up to 40
- **Network connected** on both sides
- **Real Time** operation
- **Data consistency across the network**
- **Broadcasting, Multicasting**

MEM-BUS CANopen ENCODER PROFILE

- Complying with standards **CiA DS 301** "Application Layer and Communication Profile" and **DS 406** "Device Profile for Encoders"
- Class **C2**

SETTABLE PARAMETERS	DIAGNOSTIC FUNCTIONS	STATE INDICATORS
<ul style="list-style-type: none"> • Steps/revolution • Revolutions number • Preset • Rotation direction 	<ul style="list-style-type: none"> • Position or parameter error • Battery alarm 	3 signalling LEDs for: <ul style="list-style-type: none"> • Supply • Line • Error

MECHANICAL & ENVIRONMENTAL SPECIFICATIONS		
MEM-Bus	620/520/540	410/450
• Materials: case shaft	Aluminium Stainless steel	
• Weight	500 g ca.	
• Shaft/jHollow shaft Ø	6, 8, 10 mm	8, 10, 12, 14, 15 mm
• Revolutions/minute	6000	
• Starting torque	≤0,8 Ncm	
• Inertia	≤25 g cm ²	
• Max load	80 N axial/100 N radial	
• Vibrations resistance (10÷2000 Hz)	100 m/sec ²	
• Shock (11 ms)	50 G	
• Protection degree	IP65 optional IP67	IP65
• Operating temperature	-30 ÷ 70°C	
• Stacking temperature	-30 ÷ 85°C	

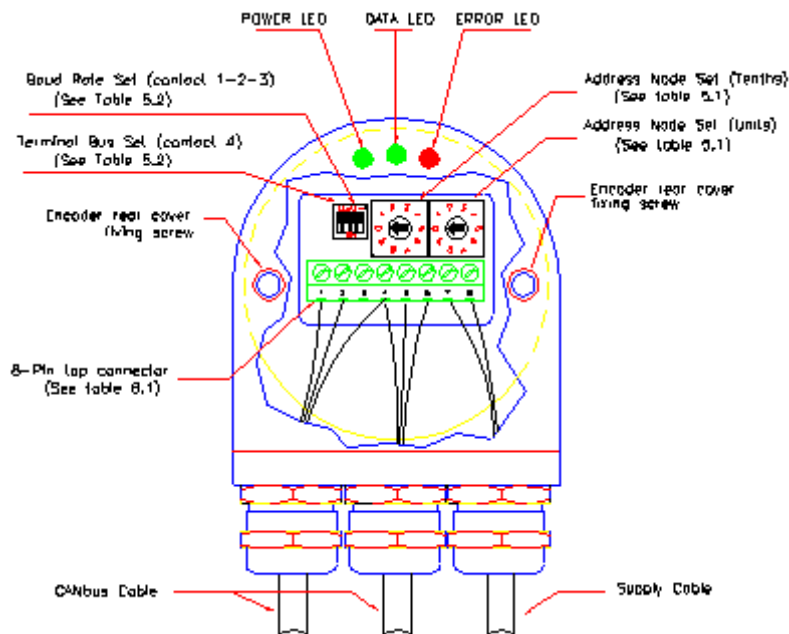
ELECTRICAL & OPERATING SPECIFICATIONS	
• Operating principle	Magnetic
• Resolution/revoltution	8192 steps/rev – 13 bit
• Revolutions no. (multiturn)	65536/16 bit
• Initializing time	< 1 s
• Data memory	>21 years power off
• Fieldbus	CANopen
• Supply	5 ÷ 28 Vdc Protection against polarity reversal
• Power consumption	2 W
• Accuracy	± ½ LSB
• Connection	3 cableglans or 2 cableglans or 2 M12 connectors
• Interference immunity	EN 61000-6-2
• Emitted interference	EN61000-6-4



ELAP VIA VITTORIO VENETO, 4-I-20094 CORSICO (MI) • TEL. +39.02.4519561
FAX +39.02.45103406 • E-MAIL INFO@ELAP.IT • SITE WWW.ELAP.IT

AVAILABLE MECHANICAL VERSIONS				
MEM620-Bus	MEM520-Bus	MEM540-Bus	MEM410-Bus	MEM450-Bus
Ø 58 mm body 63,5x63,5 mm square flange • Ø 31,75 mm centering mask Shaft Ø 6, 8 or 10 mm	Ø 58 mm body Ø 58 mm round flange • Ø 50 mm centering mask Servo coupling Shaft Ø 6, 8 or 10 mm	Ø 58 mm body Ø 58 mm round flange • Ø 36 mm centering mask • 3 holes M4 a 120° on Ø 48 mm Shaft Ø 6, 8 or 10 mm	Ø 58 mm body Blind hollow shaft for motor fixing Hollow shaft Ø 8, 10, 12, 14 or 15 mm	Ø 58 mm body Blind hollow shaft for motor fixing. Hollow shaft Ø 8, 10, 12, 14 or 15 mm Fixing by elastic metal support
SIZE25	SYNCHRO FLANGE	CLAMPING FLANGE		

PROGRAMMING & SETTING

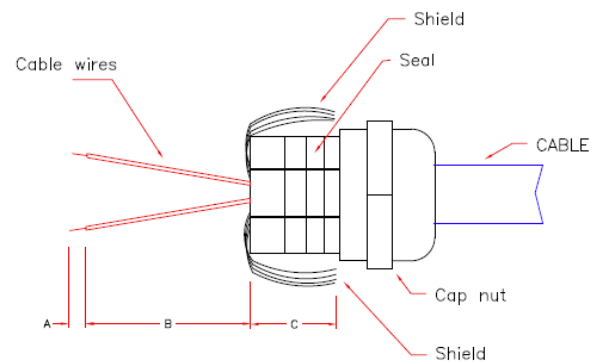


The **node ID** (user address) can be defined/modified in object 2101H or by using two rotary switches of the encoder.

The **baud rate** can be defined/modified in object 2100H or by means of contacts 1, 2 and 3 of the encoder DIP switch.

CONNECTIONS WITH CABLE GLANDS PG9

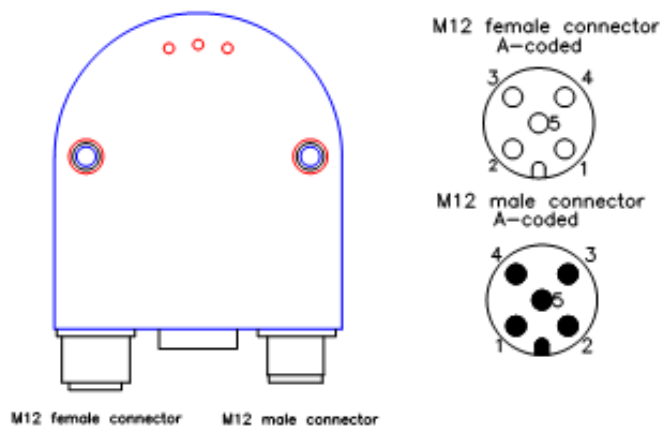
PIN N°	NAME	DESCRIPTION
1	CAN L	CAN BUS SIGNAL Low
2	CAN H	CAN BUS SIGNAL High
3	+V	+ SUPPLY 5/28Vdc
4	GND	GND
5	CAN L	CAN BUS SIGNAL Low
6	CAN H	CAN BUS SIGNAL High
7	+V	+ SUPPLY 5/28Vdc
8	GND	GND



A: 6 mm approx.
B: 35 mm approx.
C: 11 mm approx.

Picture 10.1

CONNECTIONS WITH CONNECTORS M12



PIN N°	NAME	DESCRIPTION
1		NOT CONNECTED
2	+V	+ SUPPLY 5/28Vdc
3	GND	GND
4	CAN H	CAN BUS SIGNAL high
5	CAN L	CAN BUS SIGNAL low

ORDERING INFORMATION

MEM520B	CAN	M	10	3P
				CONNECTIONS 3P 3 cable glands 2P 2 cable glands 2C 2 M12 connectors
				SHAFT/JOINT HOLE Ø Shaft 6 – 8 – 10 Hollow shaft 8 – 10 - 12 – 14 – 15 mm
		No. of TURNS M = Multiturn S = Singleturn		
	INTERFACE CAN = CANopen			

TYPE

- MEM520-Bus** = Round flange Ø 58 mm
- MEM540-Bus** = Round flange Ø 58 mm
- MEM620-Bus** = Square flange 63.5x63.5 mm
- MEM410-Bus** = Blind hollow shaft for motor coupling
- MEM450-Bus** = Blind hollow shaft, fixing by elastic support

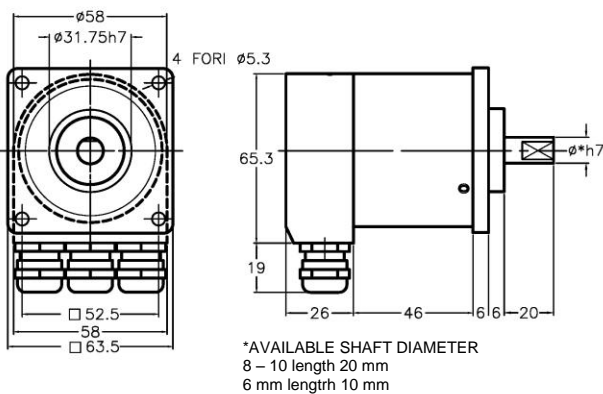
ELAP reserves the right to upgrade the product without notice

DIMENSIONS

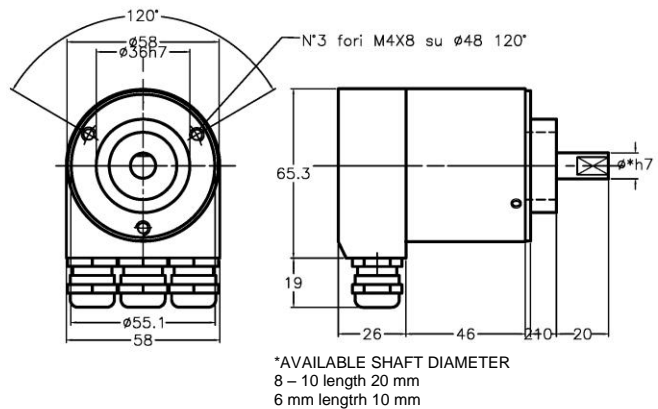
CONNECTIONS BY P9 CABLE GLANDS

Ref M1395V

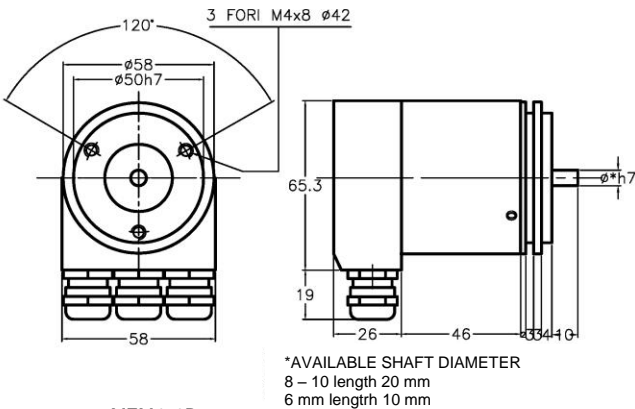
MEM620Bus



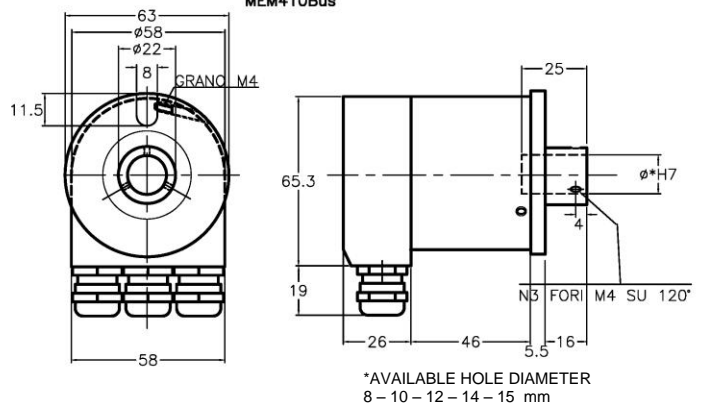
MEM540Bus



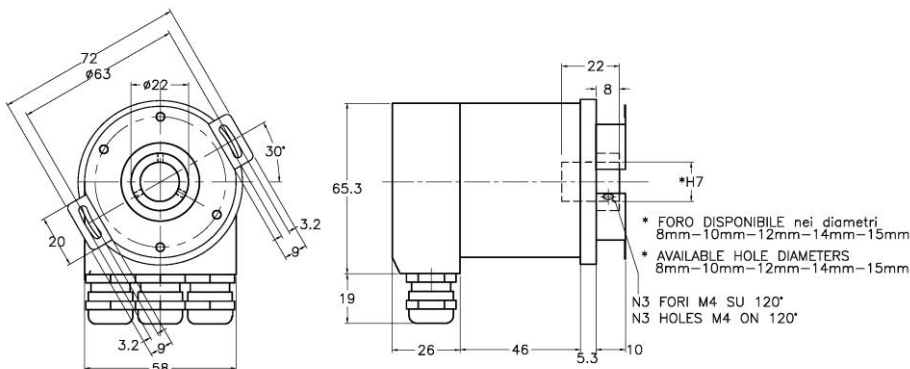
MEM520Bus



MEM410Bus



MEM450Bus



Ref M2048



MEM430-Bus



MEM410-Bus

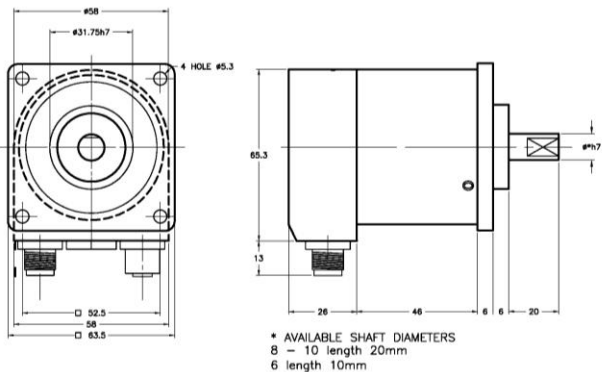


MEM540-Bus

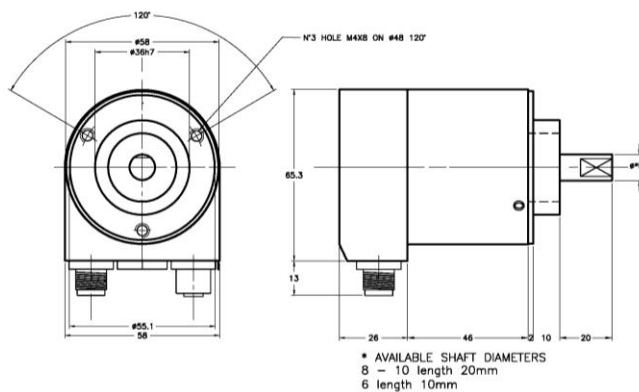
DIMENSIONS

CONNECTIONS BY M12 CONNECTORS

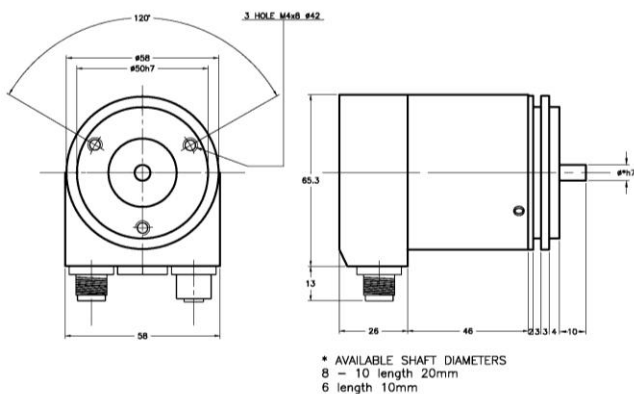
MEM620Bus



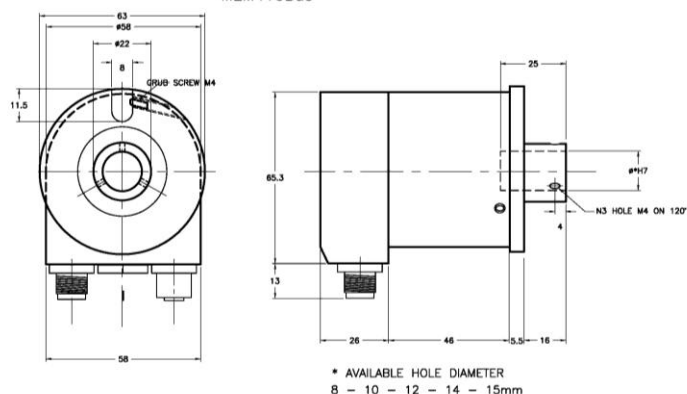
MEM540Bus



MEM520Bus

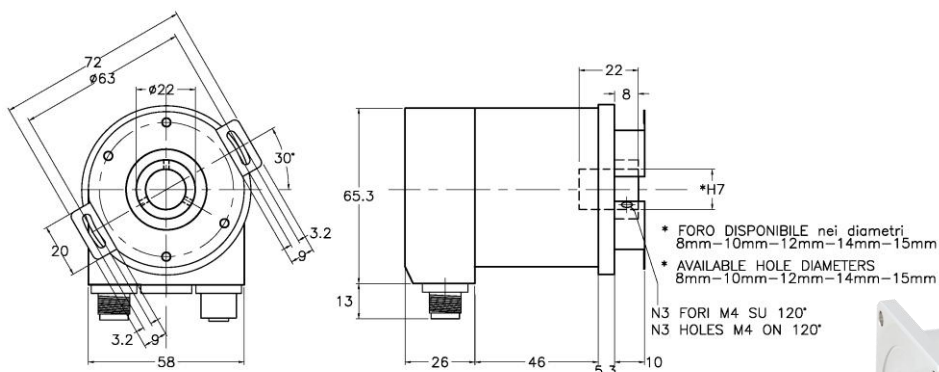


MEM410Bus



Ref.M1607

MEM450Bus



AVAILABLE JJOINT HOLE DIAMETERS

Rif. M2053



2 M12-connector outlet



ELAP VIA VITTORIO VENETO, 4-I-20094 CORSICO (MI) • TEL. +39.02.4519561
FAX +39.02.45103406 • E-MAIL INFO@ELAP.IT • SITE WWW.ELAP.IT